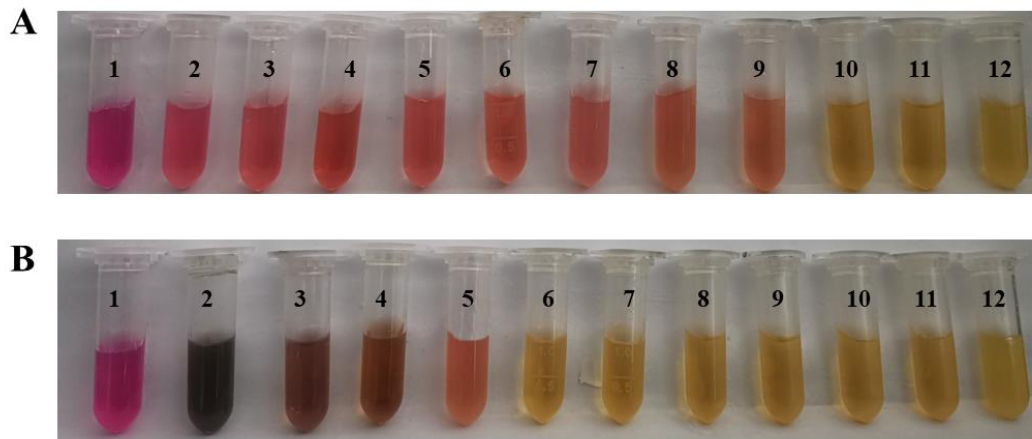


**Appendix A Gross air sac lesions scores.** (A) 0 points; (B) 1 points; (C) 2 points; (D) 3 points; (E) 4 points.



**Appendix B Effects of tiamulin and Chinese herbal medicinal formulae**

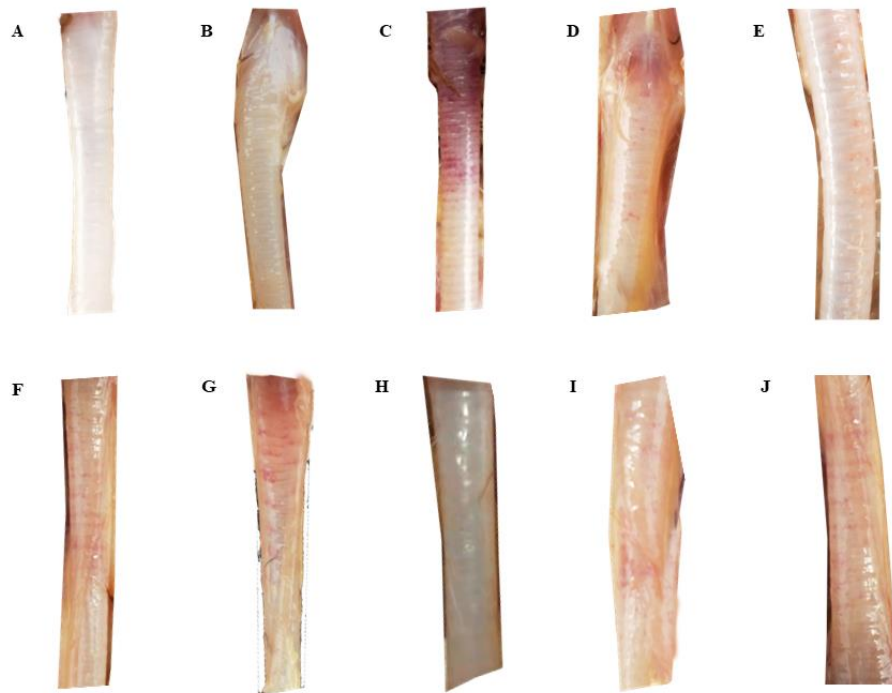
**(CHMF) on MG growth.** (A) The effect of tiamulin on MG growth. MG was cultured in FM-4 medium with various concentrations of tiamulin (0–0.128 $\mu$ g/mL).

(A-1) FM-4 medium control group. (A-12) FM-4 medium + MG control group. (A 2–11) FM-4 medium + tiamulin (128–0.25 ng/mL) + MG groups.

(B) The effect of CHMF on MG growth. (B-1) FM-4 medium control group. (B-12) FM-4 medium + MG control group.

(B 2–11) FM-4 medium + CHMF (100–0.1 mg/mL) + MG groups.

After 3 days of incubation, the culture medium was photographed.



**Appendix C Trachea of each group of chicks.** (A) BCG, blank control group; (B) NCG, normal saline control group; (C) MGG, MG-infected group; (D) TiaG (500 mg L<sup>-1</sup>), tiamulin treatment group; (E) CTG (1.0 mL), high-dose CHMF treatment group; (F) CTG (0.75 mL), medium-dose CHMF treatment group; (G) CTG (0.5 mL), low-dose CHMF treatment group; (H) PTG (1.0 ml), high-dose CHMF prevention and treatment group; (I) PTG (0.75 ml), medium-dose CHMF prevention and treatment group; (J) PTG (0.5 ml), low-dose CHMF prevention and treatment group.

**Appendix D** The effect of Chinese herbal medicinal formulae (CHMF) on the performance of chicks

<b>Groups</b>	<b>Weight gain (g)</b>	<b>FCR</b>
BGG	67.20±14.70	1.26±0.34
NCG	66.17±8.33	1.45±0.17
PTG (1.0 ml)	73.60±10.07	1.12±0.14
PTG (0.75 ml)	72.20±11.75	1.15±0.22
PTG (0.5 ml)	67.70±9.68	1.22±0.18

<sup>1)</sup> BCG, blank control group; NCG, normal saline control group; MGG, MG-infected group; PTG (1.0 ml), high-dose CHMF prevention and treatment group; PTG (0.75 ml), medium-dose CHMF prevention and treatment group; PTG (0.5 ml), low-dose CHMF prevention and treatment group.