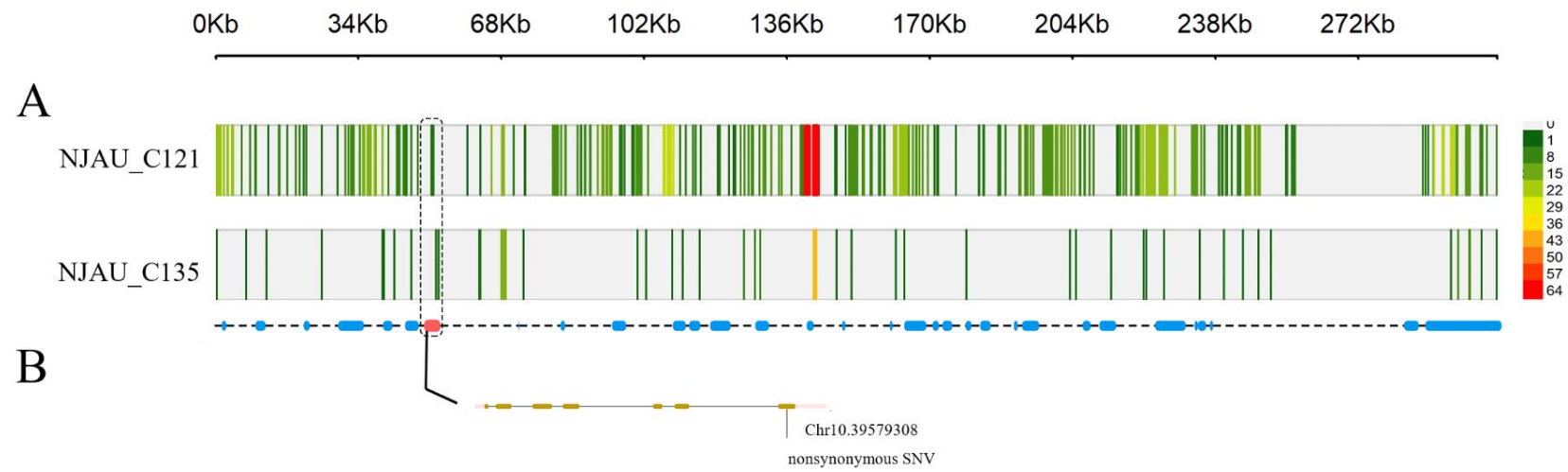


Appendix A The SNP-Based soybean genetic linkage map based on ‘Jiangpu wild soybean-3’ by ‘Nannong 06-17’ RILs population. The distances of SNP markers in cM are shown.



Appendix D (A) Gmax_W82 as the reference genome, two materials in the candidate interval (Chr.10: 39526216-39831779) SNP density map, each 5 Kb was selected as one bin, color represents the number of SNP in each bin. (B) the gene distribution in the candidate region.