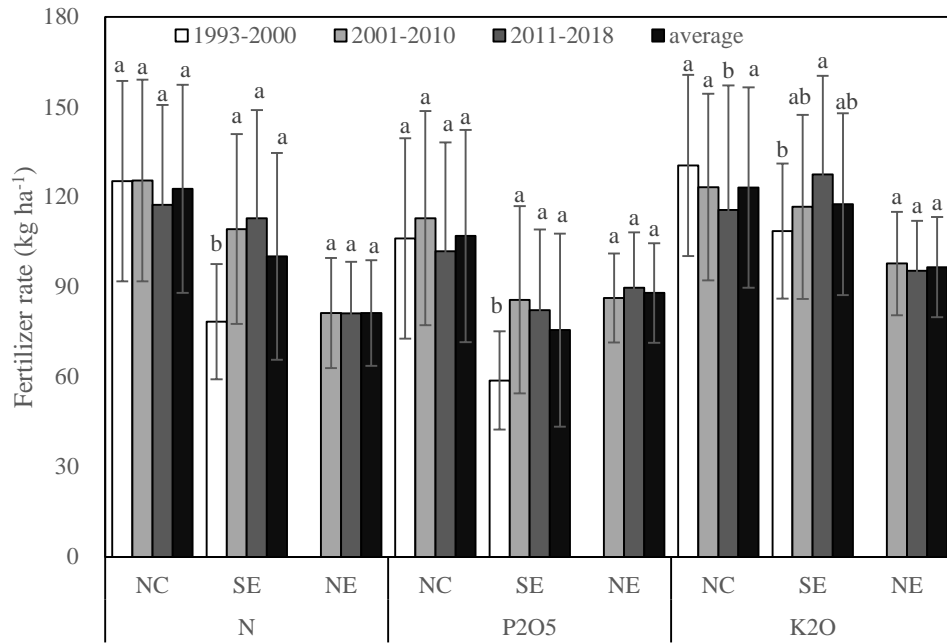


Appendix A. The attainable highest pod yield of peanut from 1993 to 2017 in three regions of China.

NC, North-central; SE, Southeast; NE, Northeast.



Appendix B. The rate of N, P, and K fertilizers across different periods in three regions of China.

NC, North-central; SE, Southeast; NE, Northeast. Error bars indicate the standard error ( $n=58-135$ ),

Appendix C. Soil average nutrient contents in three regions of China.

Regions	OM (g kg <sup>-1</sup> )	pH	TN (g kg <sup>-1</sup> )	TP (g kg <sup>-1</sup> )	TK (g kg <sup>-1</sup> )	AN (mg kg <sup>-1</sup> )	AP (mg kg <sup>-1</sup> )	AK (mg kg <sup>-1</sup> )
NC	12.6 (2.4-27.5)	6.63 (4.51-8.34)	0.71 (0.06-1.61)	0.95 (0.1-3.9)	17.70 (4.5-25.5)	69.45 (4.8-129.4)	35.14 (3.2-105.1)	97.8 (24.5-210.8)
SE	14.1 (0.2-30.1)	5.84 (4.14-7.64)	1.12 (0.4-2.2)	0.57 (0.1-1.4)	7.9 (1.7-19.6)	79.7 (16.6-128.9)	24.9 (1.3-71.4)	91.4 (6.8-194.7)
NE	16.7 (2.0-29.1)	6.46 (5.32-7.87)	0.99 (0.3-1.9)	0.41 (0.1-0.9)	17.1 (2.7-21.8)	77.4 (46.3-137.4)	20.1 (4.6-66.3)	102.1 (55.4-202.6)

The nutrient content was the average value of all experiments used with original soil nutrient data. NC, North-central; SE, Southeast; NE, northeast; OM, organic matter;

TN, total nitrogen; TP, total phosphorus; TK, total potassium; AN, available nitrogen; AP, available phosphorus; AK, available potassium.

