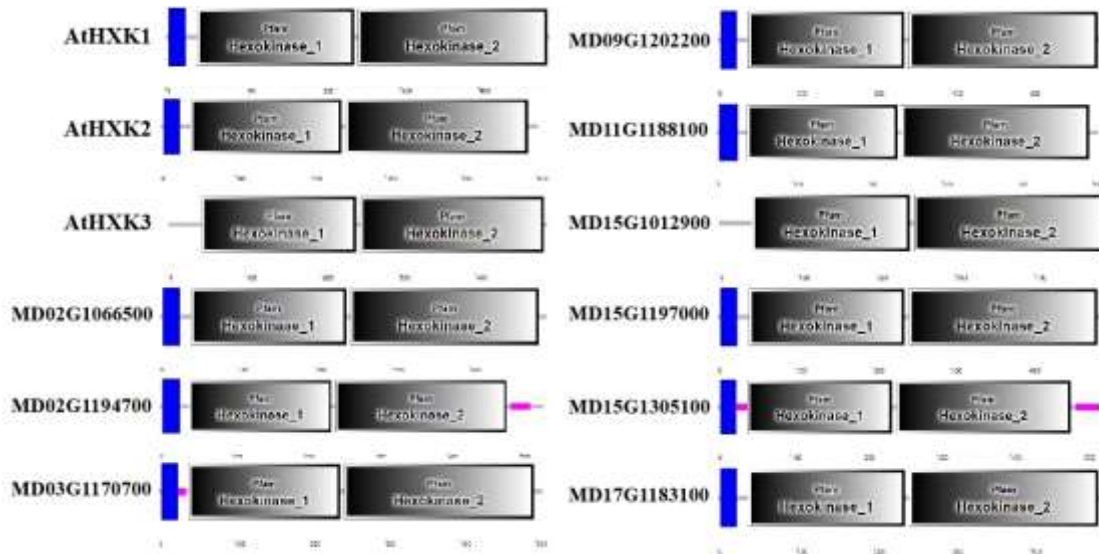


Appendix B-C and I-J

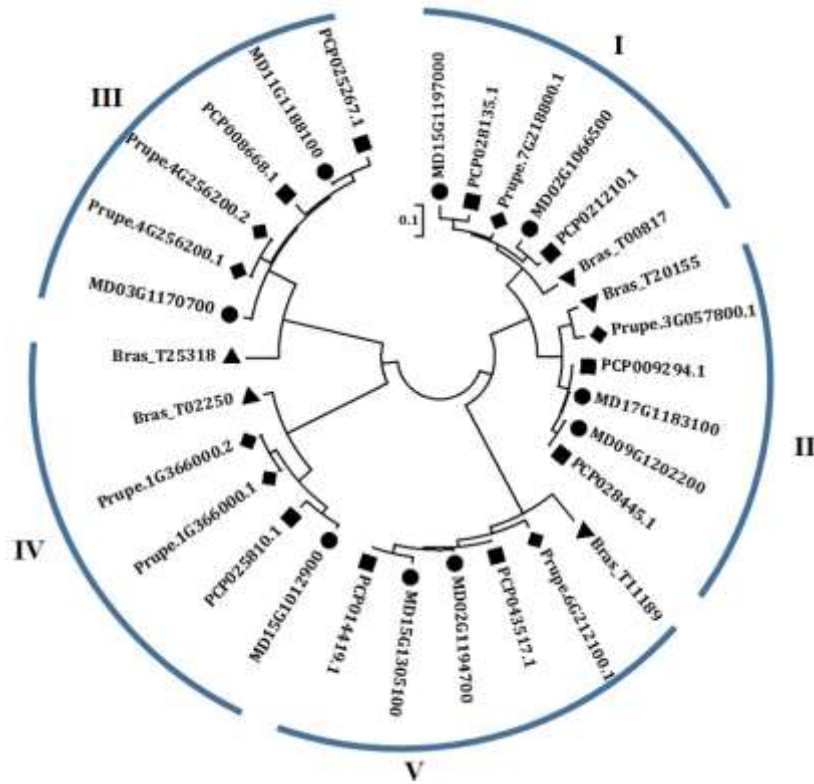
MD02G1066500	NA								
MD02G1194700	0.22	NA							
MD03G1170700	0.16	0.21	NA						
MD09G1202200	0.13	0.21	0.59	NA					
MD11G1188100	0.18	0.25	0.16	0.64	NA				
MD15G1012900	0.15	0.2	0.17	0.16	0.21	NA			
MD15G1197000	0.16	0.18	0.11	0.15	0.16	0.14	NA		
MD15G1305100	0.18	0.25	0.13	0.21	0.25	0.17	0.13	NA	
MD17G1183100	0.12	0.17	0.51	0.14	0.55	0.13	0.12	0.16	NA

MD02G1066500 *MD02G1194700* *MD03G1170700* *MD09G1202200* *MD11G1188100* *MD15G1012900* *MD15G1197000* *MD15G1305100* *MD17G1183100*

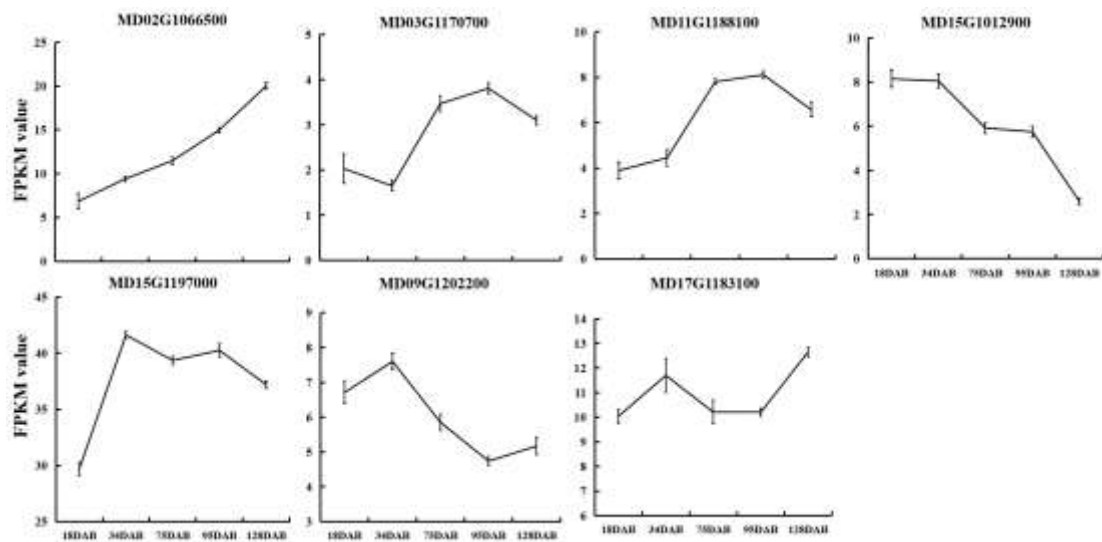
Appendix B Estimation of ω values of the MdH XK gene family using the ML method.



Appendix C The conserved domain of nine MdH XKs and AtH XK1-3. The two grey boxes represent conserved domains of Hexokinase-1 and Hexokinase-2, the blue box represents transmembrane region, and the pink box represents signal peptide.



Appendix I Phylogenetic tree analysis of HXK genes in four Rosaceae species using maximum likelihood (ML) method.



Appendix J The expression profiles of MdHXK genes in five developmental stages of apple fruit.