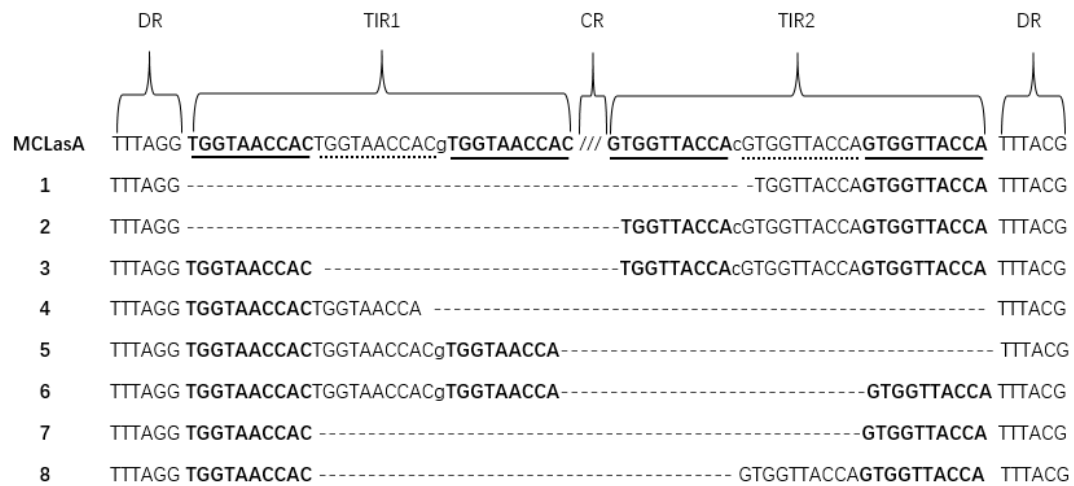


Appendix A Electrophoretic profiles of representative ‘*Candidatus Liberibacter asiaticus*’ strains from PCR amplification with primer set LapPF-1f/LapPF-1r. Three amplicon types, B720, B630, and B350, are designated. -CK represents DNA from healthy citrus. Lane M on the right shows molecular markers in bp.



Appendix B Schematic illustration of MCLas-A sequence and eight remnant types. DR: direct repeat region, TIR: terminal inverted repeat, CR: central region, - indicates a nucleotide deletion.