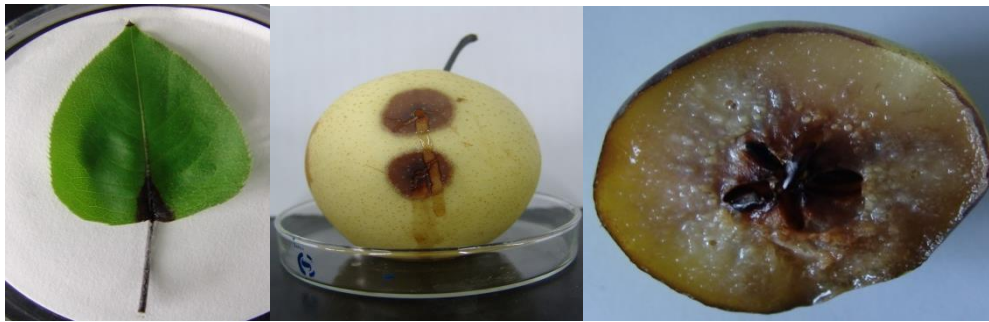




A

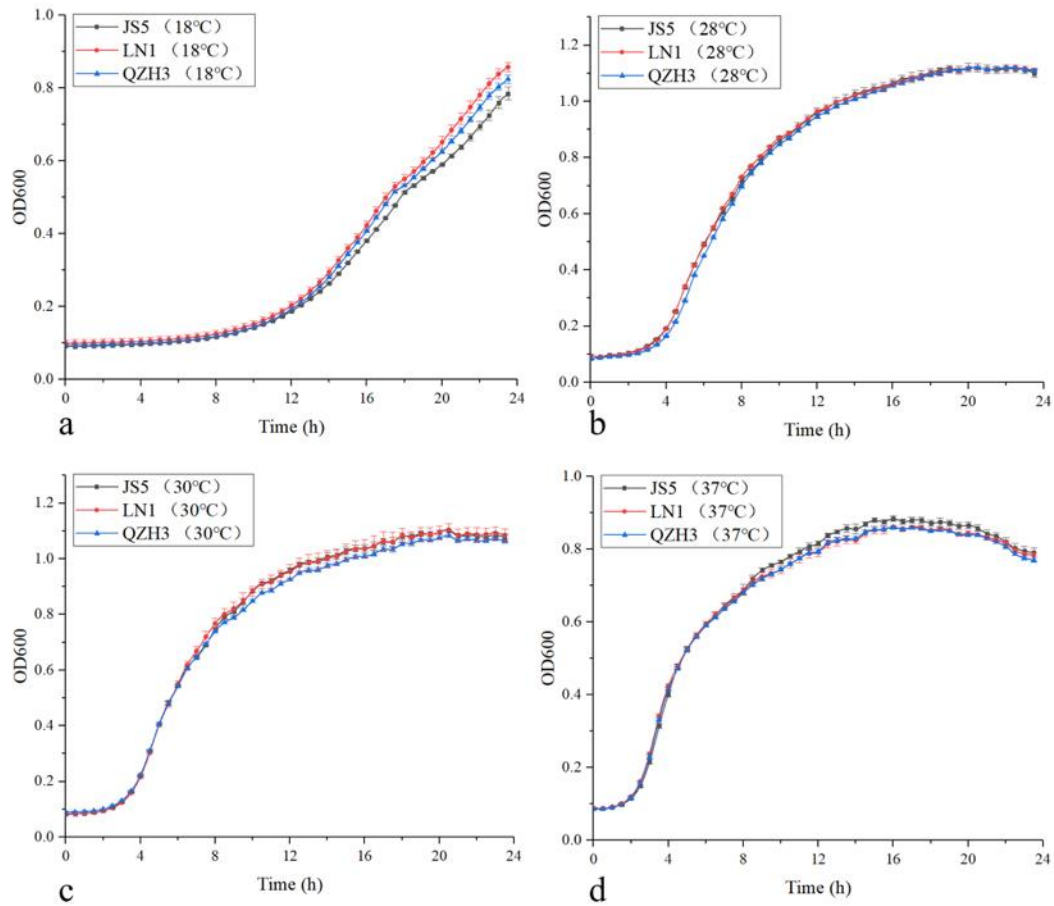
B

Appendix A Cross (A) and vertical (B) region of affected pear trunks.

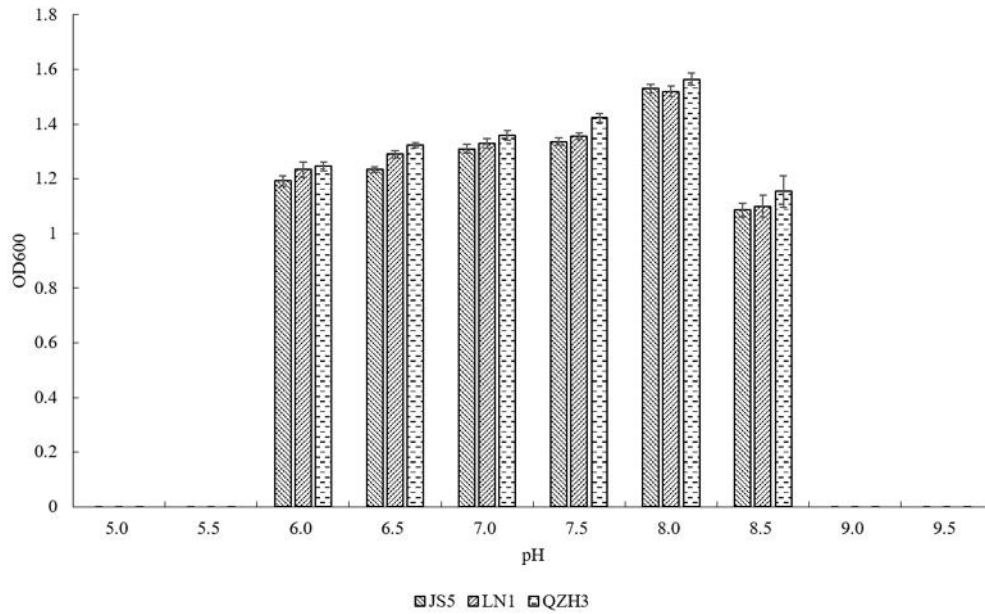


Appendix B Symptoms of pear leaves (A) and fruits (B and C) inoculated by *D.*

fangzhongdai for one week.



Appendix C Growth curves of *D. fangzhongdai* at 18 (a), 28 (b), 30 (c) and 37°C (c) in liquid LB medium. The growth curves of *D. fangzhongdai* were measured with Bioscreen C (Bioscreen, Finland) at every half-an hour. *D. fangzhongdai* reached stationary phase at 28, 30 and 37°C in 24 hours, but the OD₆₀₀ value of stationary phase at 28°C was the highest. Therefore, the optimum temperature of *D. fangzhongdai* is 28°C.



Appendix D OD_{600} values of *D. fangzhongdai* bacterial suspension after being shaken in culture at different pH values for 12h. The optimum and limiting pH values of *D. fangzhongdai* were measured by comparing OD_{600} values of bacterial suspensions which had been shaking cultured in liquid LB medium at pH of 5.0, 5.5, 6.0, 6.5, 7.0, 7.5, 8.0, 8.5, 9.0 and 9.5 at 28°C for 24 hours. *D. fangzhongdai* bacterial suspensions in pH 4.0-5.0 and 9.0-10.0 were clear and OD_{600} value in pH 8.0 was the highest. As a result, the optimum pH of *D. fangzhongdai* was 8.0.