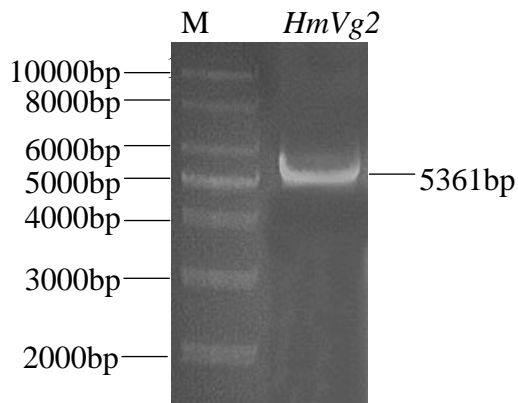


**Appendix A The relative expression level of *HmVg1* and *HmVg2* genes in male adults and female adults at 9 days 11 days and 13 days after emergence.** Expression levels of the *HmVg1* and *HmVg2* in adult insects were quantified by qRT-PCR, where expression levels of *HmEF1* gene were used as an internal control. Bars represent the mean $\pm$ standard deviation (SD) obtained from duplications of qRT-PCR analysis. The asterisks on the columns indicate significant differences ( $P < 0.05$ ).



**Appendix B PCR amplification of *HmVg2* from *H. axyridis*.** M: DNA Marker; *HmVg2*: PCR product of *HmVg2*