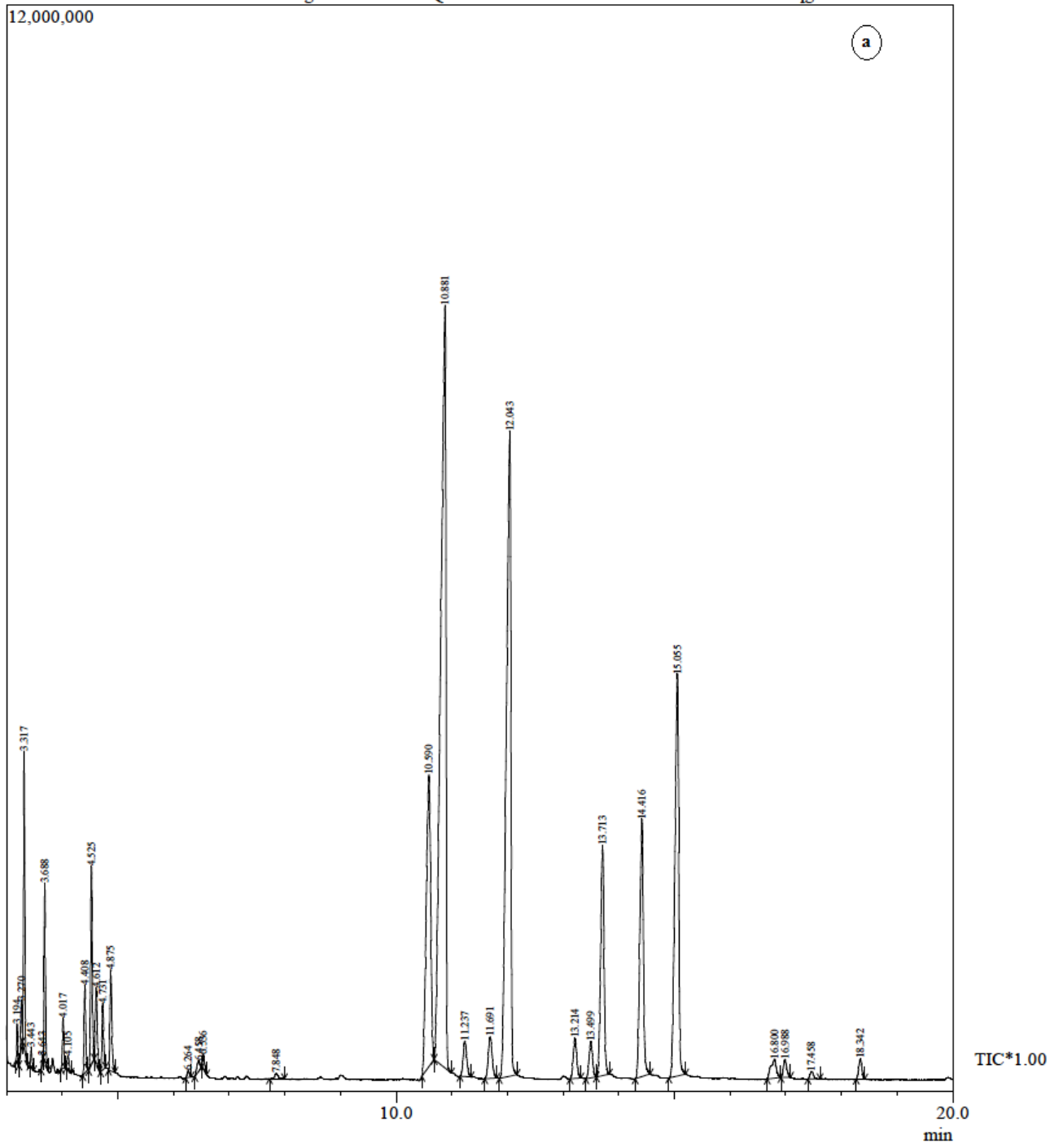
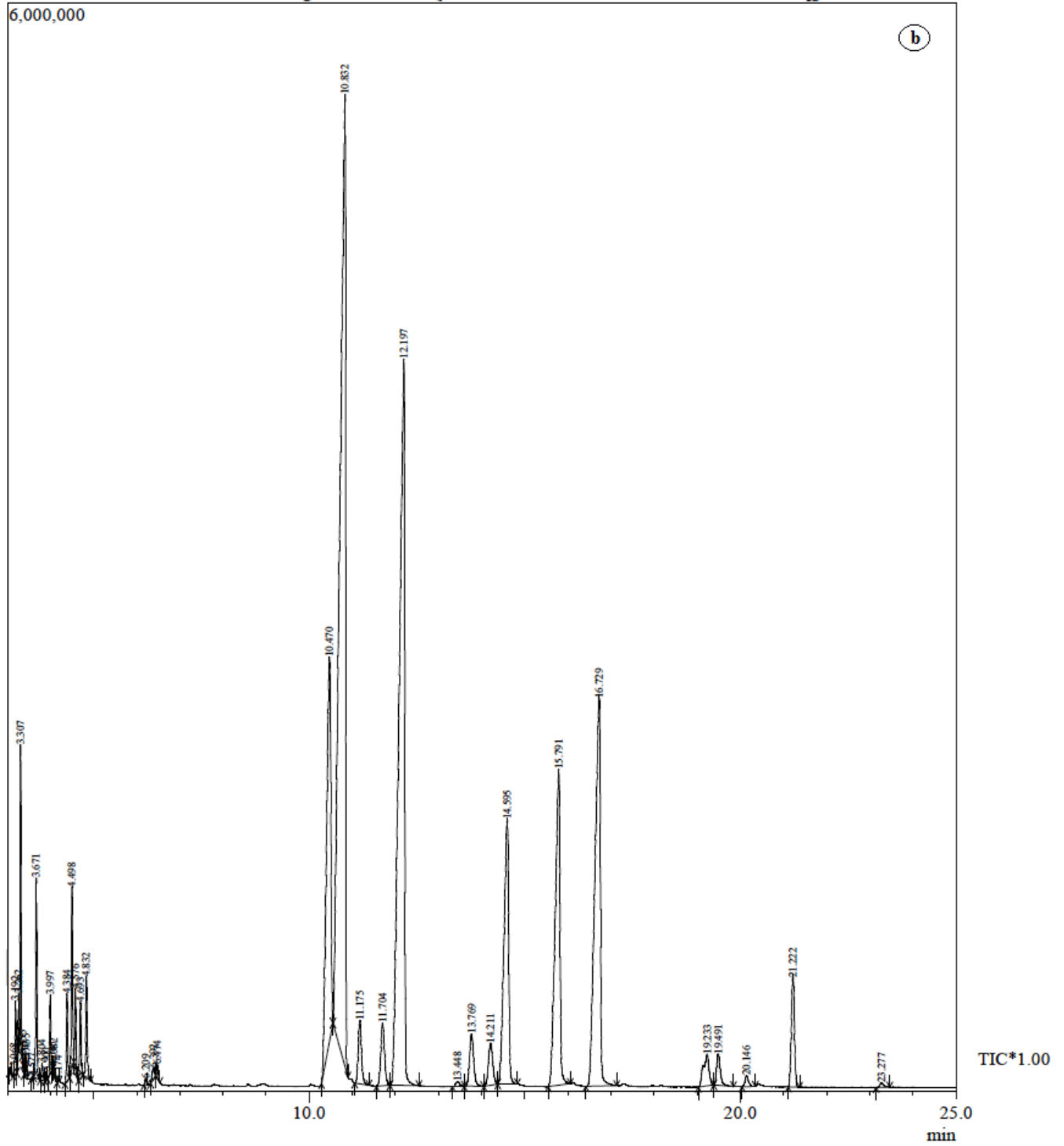
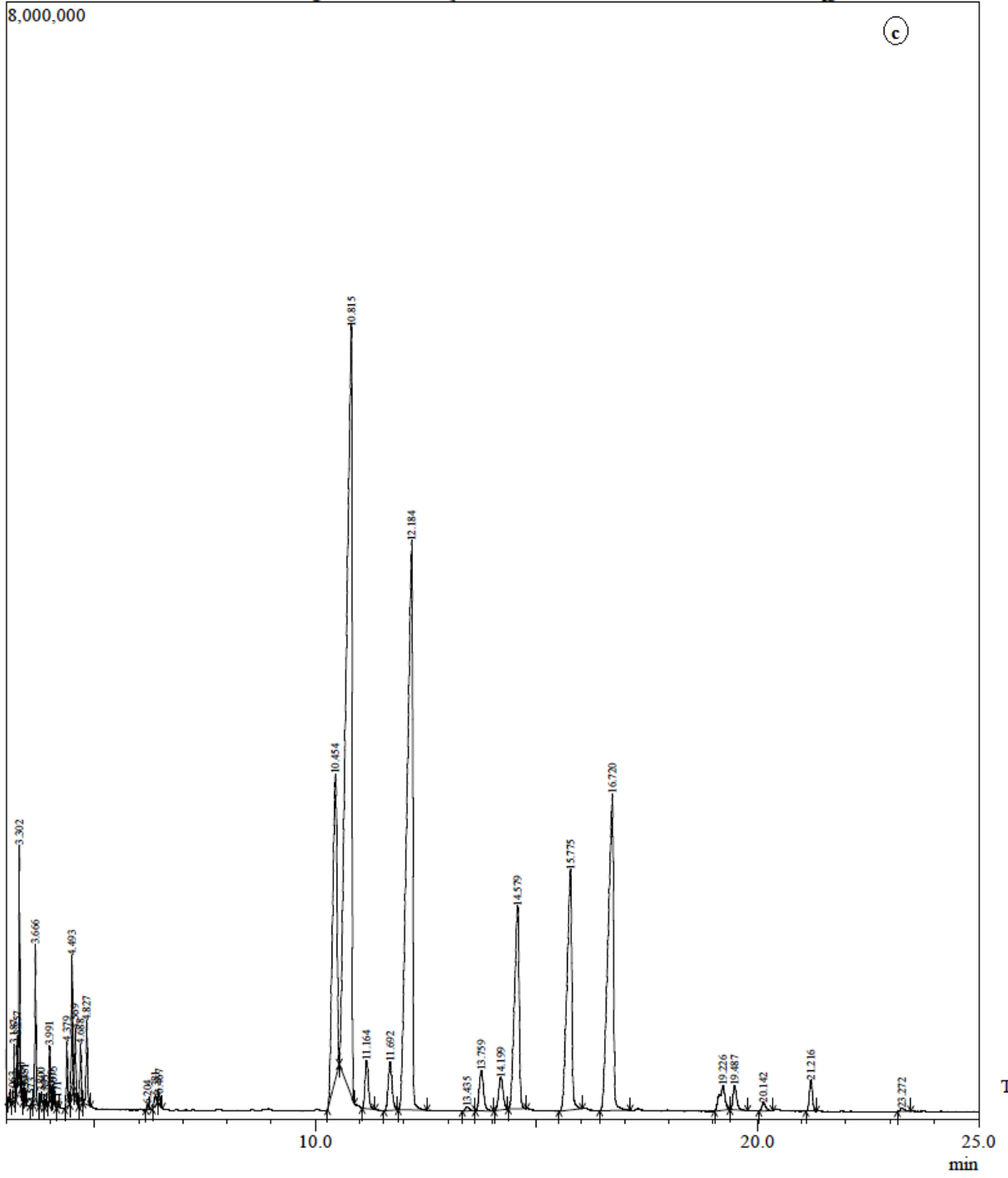


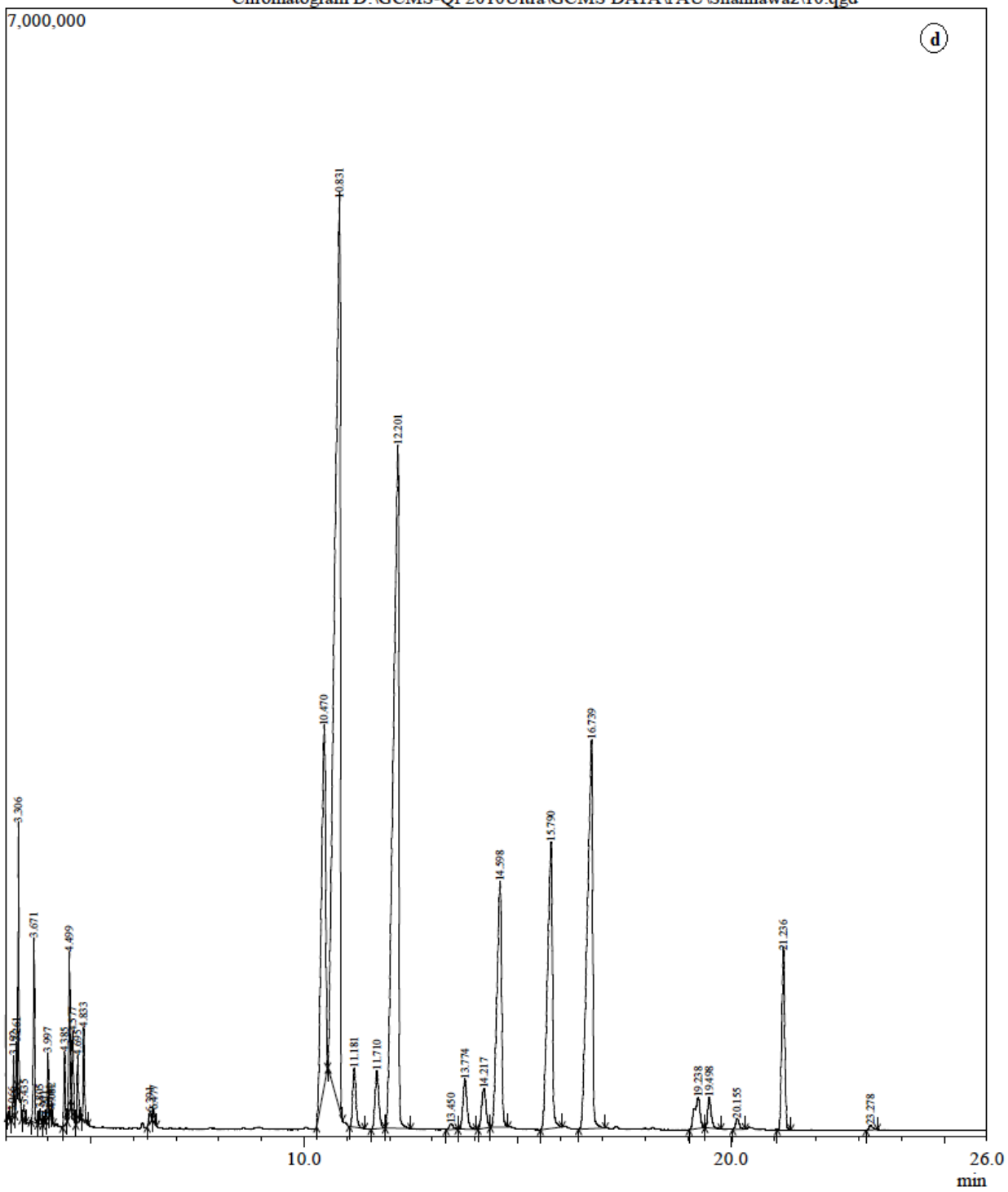
**Appendix A GC-MS chromatographs of juice samples. a) Rio red. b) Ray ruby. c) Marsh. d) Foster. e) Red blush. f) Red ruby. g) Flame. h) Star ruby.**

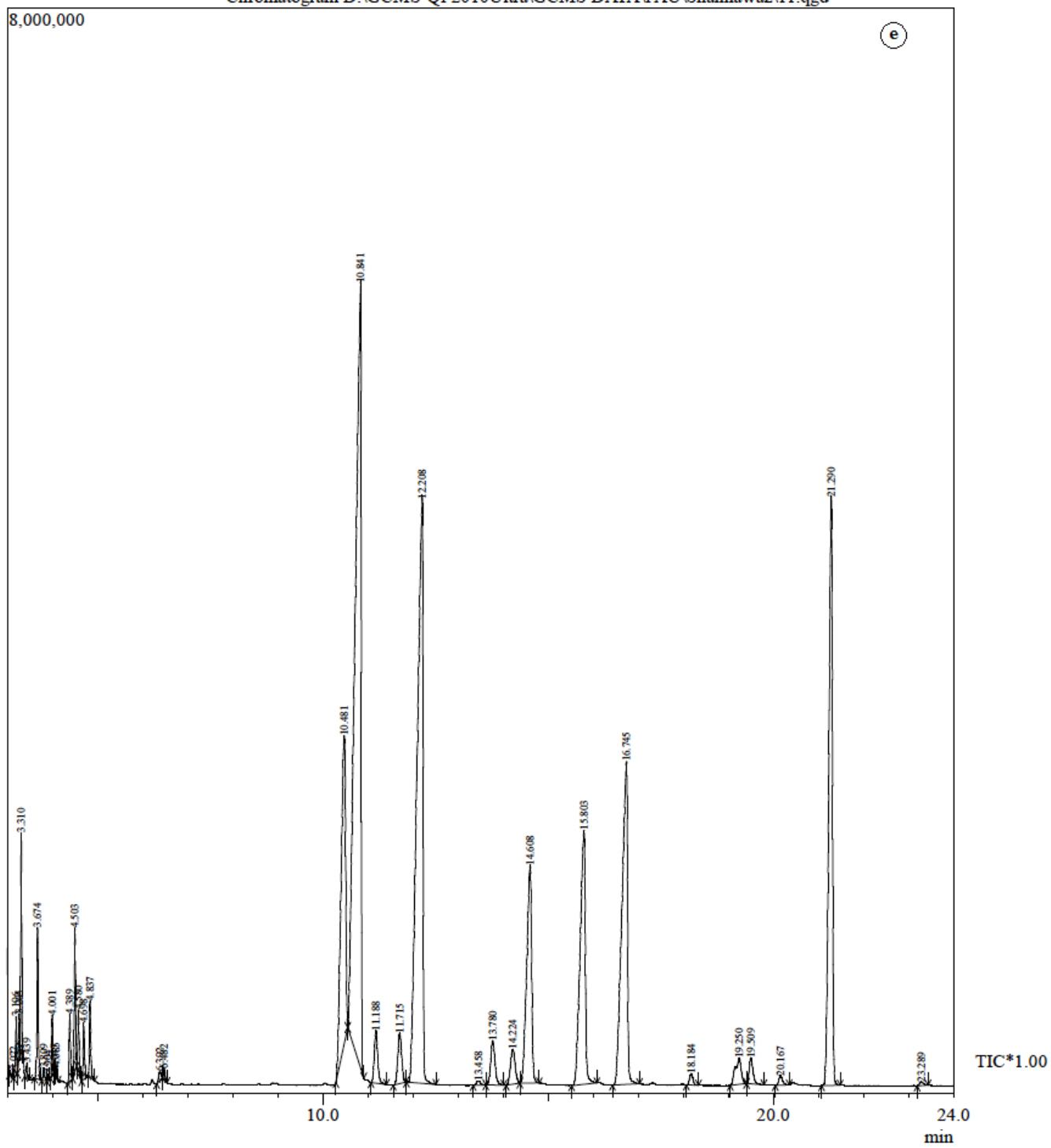


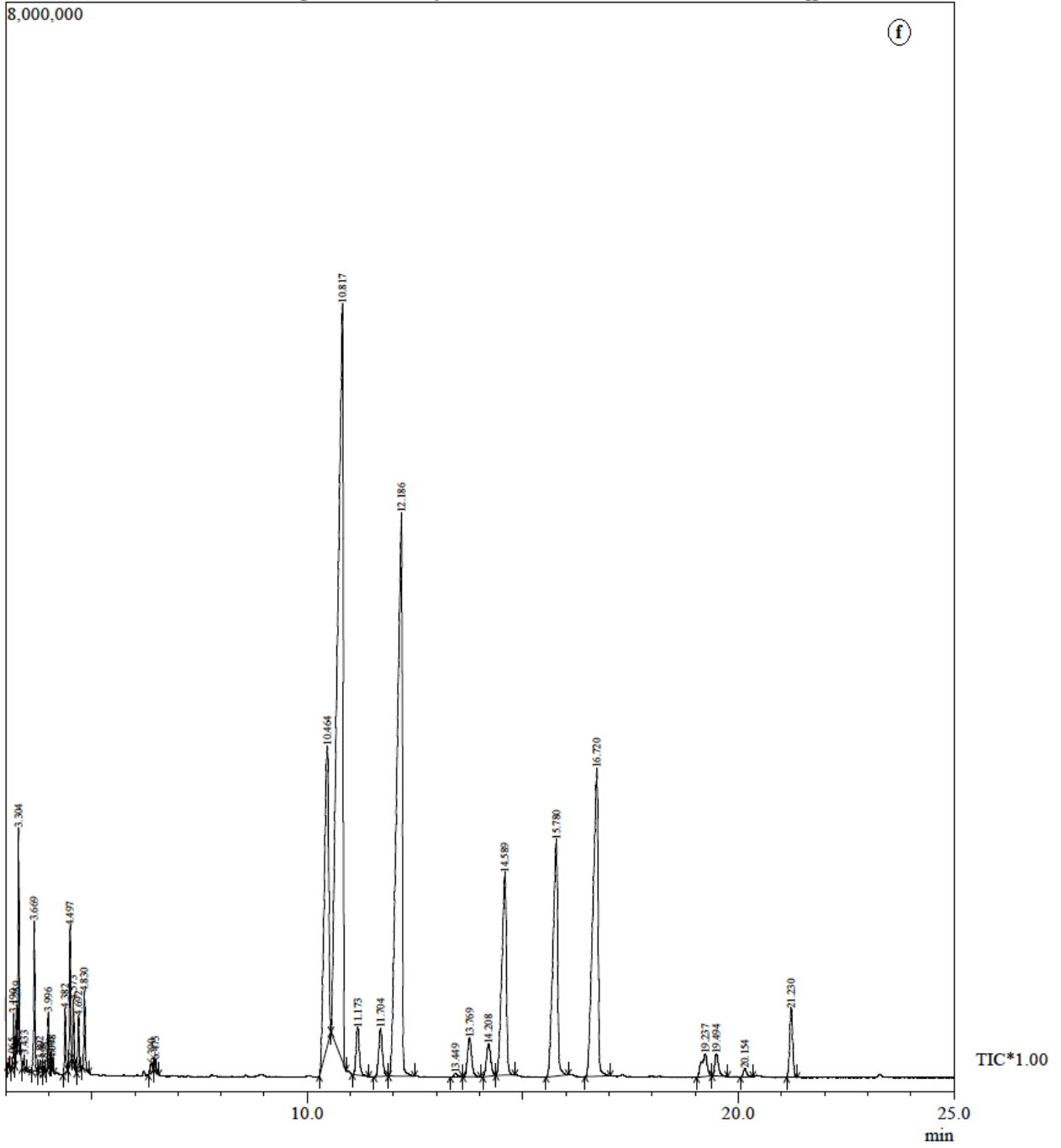


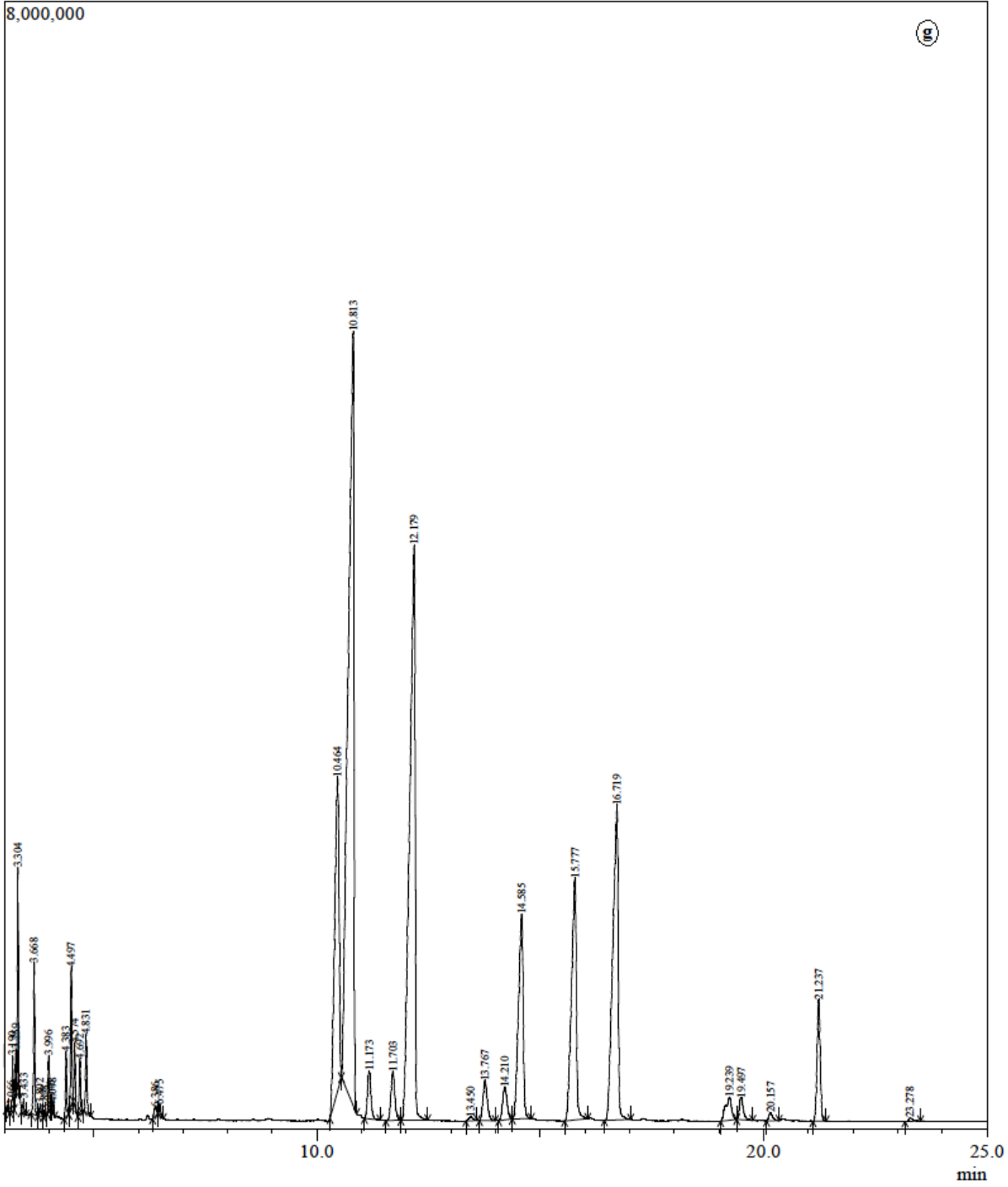


TIC\*1.00

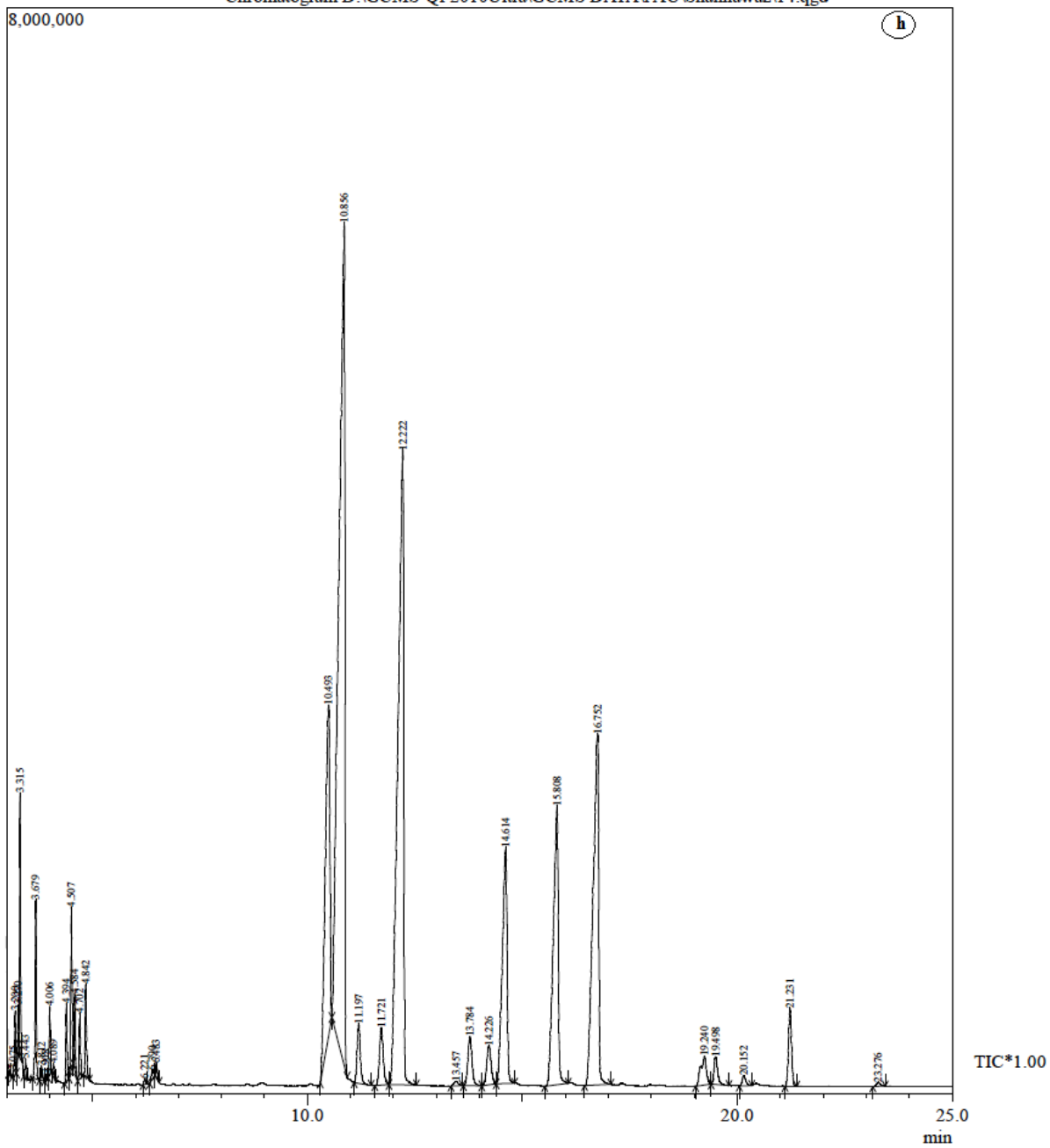












**Appendix B GC-MS chromatographs of peel oil. a) Rio red. b) Ray ruby. c) Marsh. d) Foster. e) Red blush. f) Red ruby. g) Flame. h) Star ruby.**

