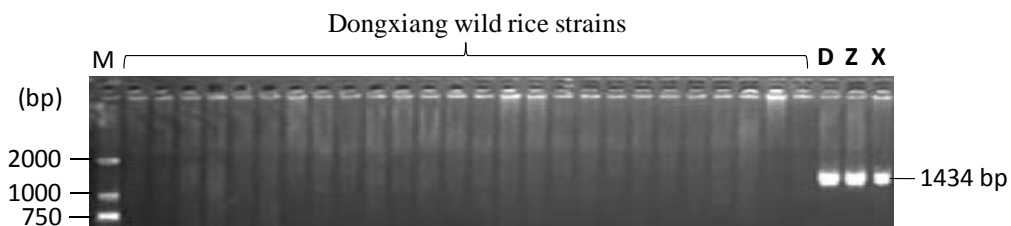


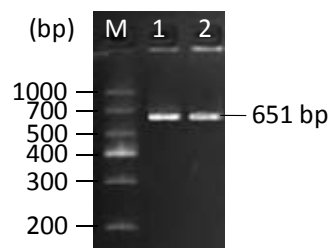
Appendix A List of the primers used in this study

Marker name	Forward sequence (5'-3')	Reverse sequence (5'-3')	Product size (bp)
orWA352	GTTGATGGGTATGGATAGAG	CGCAGGGCCTCGGTATATCTA	1434
qAtp6	GGCATTACGATCGTTGGATTTC	TTGATGGAGATTTATAGCATCATTTC	372
OsAct2	CTTCATAGGAATGGAAGCTGCGGGTA	CGACCACCTTGATCTTCATGCTGCTA	197
or216-RT1	ATGCAAATGTCCCGGATTTC	GCAACCTAGCCAAGTCTTC	163
or284-RT1	TTTTTCTTCCGTGATGTGGT	TTGGGCTCGTTCTATCTTTG	117
WA-2	TTGCTTACGCTATGGAGAAC	CAACCTAGCCAAGTCTTCCT	551/509
WA-4	GCTTTGCCGAGCATTTAGT	ATTTCCCCCGTGCTTTCT	495
WA2f4r	TTGCTTACGCTATGGAGAAC	ATTTCCCCCGTGCTTTCT	139/97
FL216	TTGCTTACGCTATGGAGAAC	CTAGGAGGCTGAGTTTTTGAT	651
FL284	ACGACGAGTGAGAAGGAT	GGCTGGAAGAGAAGAACC	1073
DW-M1	AAGCATAAAGGGGAGAGC	TTCGCTCCTGTAGTGATT	95/86



Appendix B Partial results of PCR detection of WA352 in Dongxiang wild rice strains using the orWA352 marker

D, Dong B11A; Z, Zhenshan 97A; X, XieqingzaoA



Appendix C PCR detection of *orf216* using the FL216 marker in DY1A (1) and YuetaiA (2)