

Supplementary data

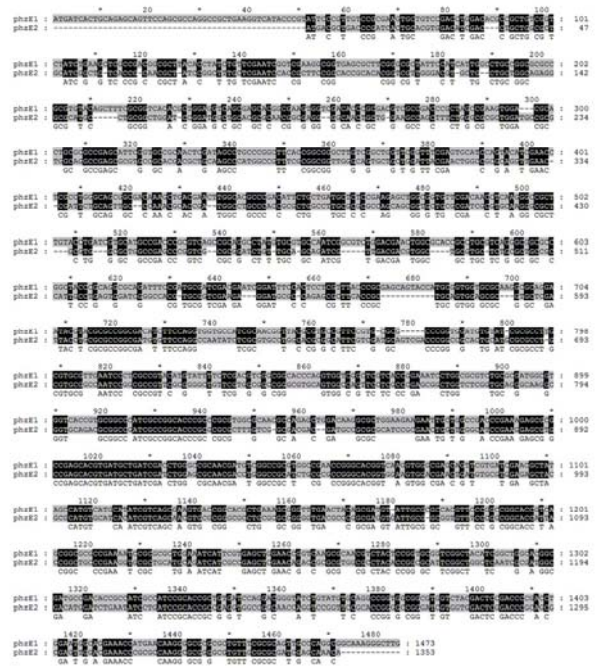
A

```

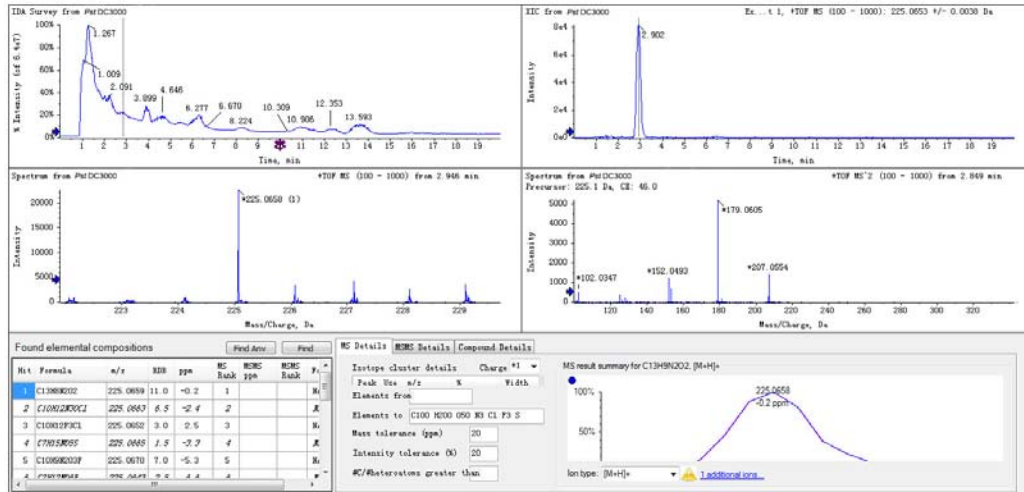
1 MITAEQFQRQAEGHTRIFVYVREVLSDLETFLSVTLKLDAGATTYLFESV 50
1 -----MTLTRSLSLHVDID--LLALRSLSPQRYPALLEST 31
51 EGGFRFGYSIIGLFAKRVYSFRGHTLEVSSEHGEVVDTRDVAEFLAEVDA 100
32 ASGTANRGRWDVILLA-----EGACLRLDFDG--CTRNGEQILLEASF 71
101 LRAENSFVQLDGLF-----CFPGGLWGFQFBCIQIIEPRLGSSGDEAD 143
72 LGLDAANQAERVPMDAASPFPFPGWAVLLDYELAAQVEPILQIPKRTD 121
144 ELGTPOILLMLSEELAVFNLKRLILVHADP-----EQPQATVVRNR 187
122 --GLPTALALEFAAVLRERVQGR--CVLALEPGRADLQGVVDVAACS 167
188 ELDELAKRLRQGGAGYFQAQISDAIDESDFKSSFTREQTHAVRKAQEVV 237
168 ALFPLPEWIG-----PRAVEEDA-----PERFTAVERVLDYL 200
230 RAGDIFQVVTSQLRVFP--RANFDVYRALRANLFSFYMLDVGQTVV 205
201 RAGDVFQANISRAWHAAFVDAVDFPALMARLRANAFPAAGLVAAGRVA 250
286 VGSPELLARLEDGVTVRFIAGTRFRGATFELDKALEEELLADPKERAE 335
251 ASSSPELRLVSVQKAWTRFIAGTRARFVGGD--DAARTRELVGHPKERAE 299
336 HVMLIDLGRNDVGRVAEPGTVEVGEQFVIERTSHVMDIVSEVGTGLKAGL 385
300 HVMLIDLERNLGRICAFGTVEVDELNCVESTAHVGDIVSVRGRLRAGV 349
386 NYSVLAATFFAGTYSGAFKLRALLETIRELEPKRMYSGAWYIGWNGD 435
350 TPGEVIAVFPGGTITGCFVRCMQIIAIELEQTARGATTGAFGLNRDGD 399
436 ADTATAIARTAVIQDGYLYVQAGGVVYDSDFLEWQETMNRGRALFRAYA 485
400 MDLNLILRTAEVAGNQRFRFTGAGIVVSDPQRELDTRAKANGVLRATE 449
486 QAAKGL 491
450 QT---- 451

```

B

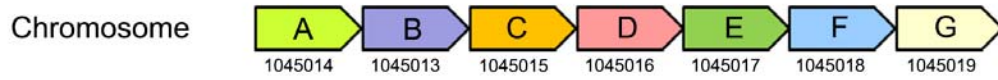


Appendix A Alignment of protein and nucleotide sequence of *phzE1* and *phzE2* of *Xoo* PXO99^A.

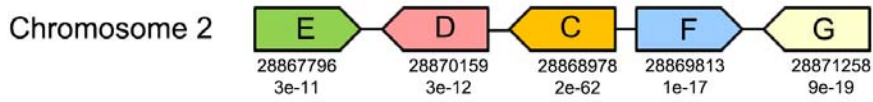


Appendix B Verification of PCA production in *Pst* DC3000 by the LS-ESI-Q-TOF/MS analysis.

Pseudomonas fluorescens 2-79



Pseudomonas syringae pv. *tomato* DC3000



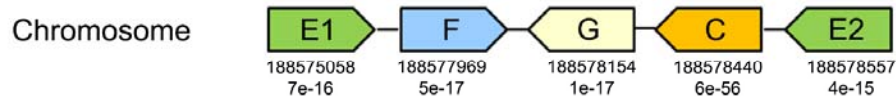
Pseudomonas syringae pv. *phaseolicola* 1448A



Pseudomonas syringae pv. *syringae* B728a



Xanthomonas oryzae pv. *oryzae* PXO99^A



Xanthomonas oryzae pv. *oryzae* KACC 10331



Xanthomonas oryzae pv. *oryzae* MAFF 311018



Appendix C Chromosomal localization of *phz* genes in three pathovars of *P. syringae* and three strains of *Xoo* PXO99^A.

Appendix D Phz proteins identified in genomes of three pathovars of *P. syringae* and three strains of *Xoo*

Bacteria	Phz homologs	e-value (BLASTP)	GI No.	Conserved domain (NCBI-CDD)
<i>Pseudomonas syringae</i> pv. <i>tomato</i> DC3000	PhzC	2e-62	28868978	DAHP_synth_2 superfamily
	PhzD	3e-12	28870159	cysteine_hydrolases superfamily
	PhzE	3e-11	28867796	Chorismate_bind superfamily; Anth_synt_I_N superfamily
	PhzF	1e-17	28869813	DAP_epimerase superfamily
<i>Pseudomonas syringae</i> pv. <i>phaseolicola</i> 1448A	PhzG	9e-19	28871258	PNPO _x _like superfamily
	PhzC	3e-62	71738131	DAHP_synth_2 superfamily
	PhzD	3e-10	71738074	cysteine_hydrolases superfamily
	PhzE	6e-13	71736813	Chorismate_bind superfamily; Anth_synt_I_N superfamily
<i>Pseudomonas syringae</i> pv. <i>syringae</i> B728a	PhzF	4e-19	71735242	DAP_epimerase superfamily
	PhzG	1e-18	71733586	PNPO _x _like superfamily
	PhzC	2e-63	66046851	DAHP_synth_2 superfamily
	PhzD	4e-10	66046092	cysteine_hydrolases superfamily
<i>Xanthomonas oryzae</i> pv. <i>oryzae</i> PXO99 ^A	PhzE	8e-12	66047836	Chorismate_bind superfamily; Anth_synt_I_N superfamily
	PhzF	5e-18	66045599	DAP_epimerase superfamily
	PhzG	2e-17	66047080	PNPO _x _like superfamily
	PhzC	6e-56	188578440	DAHP_synth_2 superfamily
<i>Xanthomonas oryzae</i> pv. <i>oryzae</i> PXO99 ^A	PhzE1	7e-16	188575058	Chorismate_bind superfamily; Anth_synt_I_N superfamily
	PhzE2	4e-15	188578557	Chorismate_bind superfamily; Anth_synt_I_N superfamily
	PhzF	5e-17	188577969	DAP_epimerase superfamily
	PhzG	1e-17	188578154	PNPO _x _like superfamily
<i>Xanthomonas</i>	PhzC	6e-56	122879061	DAHP_synth_2 superfamily

<i>oryzae</i>	pv.	PhzE1	7e-16	58583672	Chorismate_bind superfamily; Anth_synt_I_N superfamily
<i>oryzae</i>					
KACC 10331		PhzE2	6e-15	58580507	Chorismate_bind superfamily; Anth_synt_I_N superfamily
		PhzF	5e-18	58581053	DAP_epimerase superfamily
		PhzG	1e-17	58580868	PNPO _x _like superfamily
<i>Xanthomonas</i>		PhzC	6e-56	84622549	DAHP_synt_2 superfamily
<i>oryzae</i>	pv.	PhzE1	7e-16	84625481	Chorismate_bind superfamily; Anth_synt_I_N superfamily
<i>oryzae</i>					
MAFF					
311018		PhzE2	6e-15	84622466	Chorismate_bind superfamily; Anth_synt_I_N superfamily
		PhzF	2e-16	84622971	DAP_epimerase superfamily
		PhzG	1e-17	84622802	PNPO _x _like superfamily
