

Appendix B Genomic DNA was double-digested with *AscI/PacI* to create 5' deletions of *PRsFLC1* and *PRsFLC2* in early- and late-bolting radish lines. Lane: 1, *PRsFLC1-1*; 2, *PRsFLC1-2*; 3, *PRsFLC1-3*; 4, *PRsFLC1-4*; 5, *PRsFLC1-5*; 1', *PRsFLC2-1*; 2', *PRsFLC2-2*; 3', *PRsFLC2-3*; 4', *PRsFLC2-4*; 5', *PRsFLC2-5*. M: DL2000 DNA ladder.

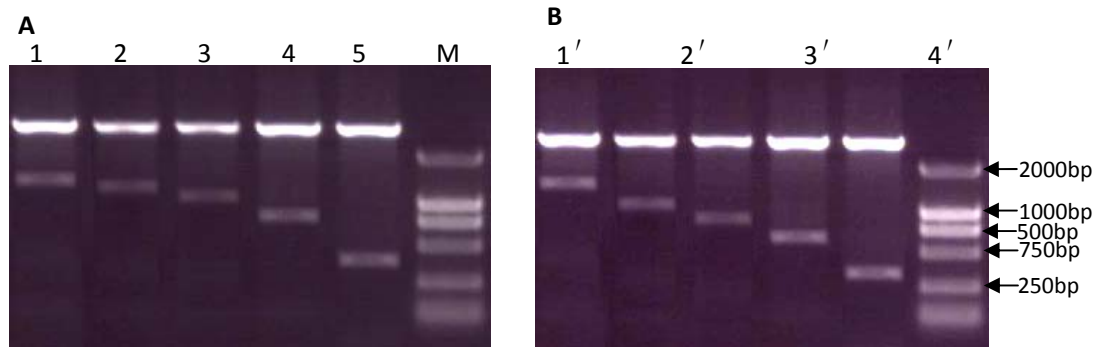


Fig S2. Genomic DNA was double-digested with *AscI/PacI* to create 5' deletions of *PRsFLC1* and *PRsFLC2* in early- and late-bolting radish lines. Lane: 1, *PRsFLC1-1*; 2, *PRsFLC1-2*; 3, *PRsFLC1-3*; 4, *PRsFLC1-4*; 5, *PRsFLC1-5*; 1' , *PRsFLC2-1*; 2' , *PRsFLC2-2*; 3' , *PRsFLC2-3*; 4' , *PRsFLC2-4*; 5' , *PRsFLC2-5*. M: DL2000 DNA ladder.