

Supplemental Figures

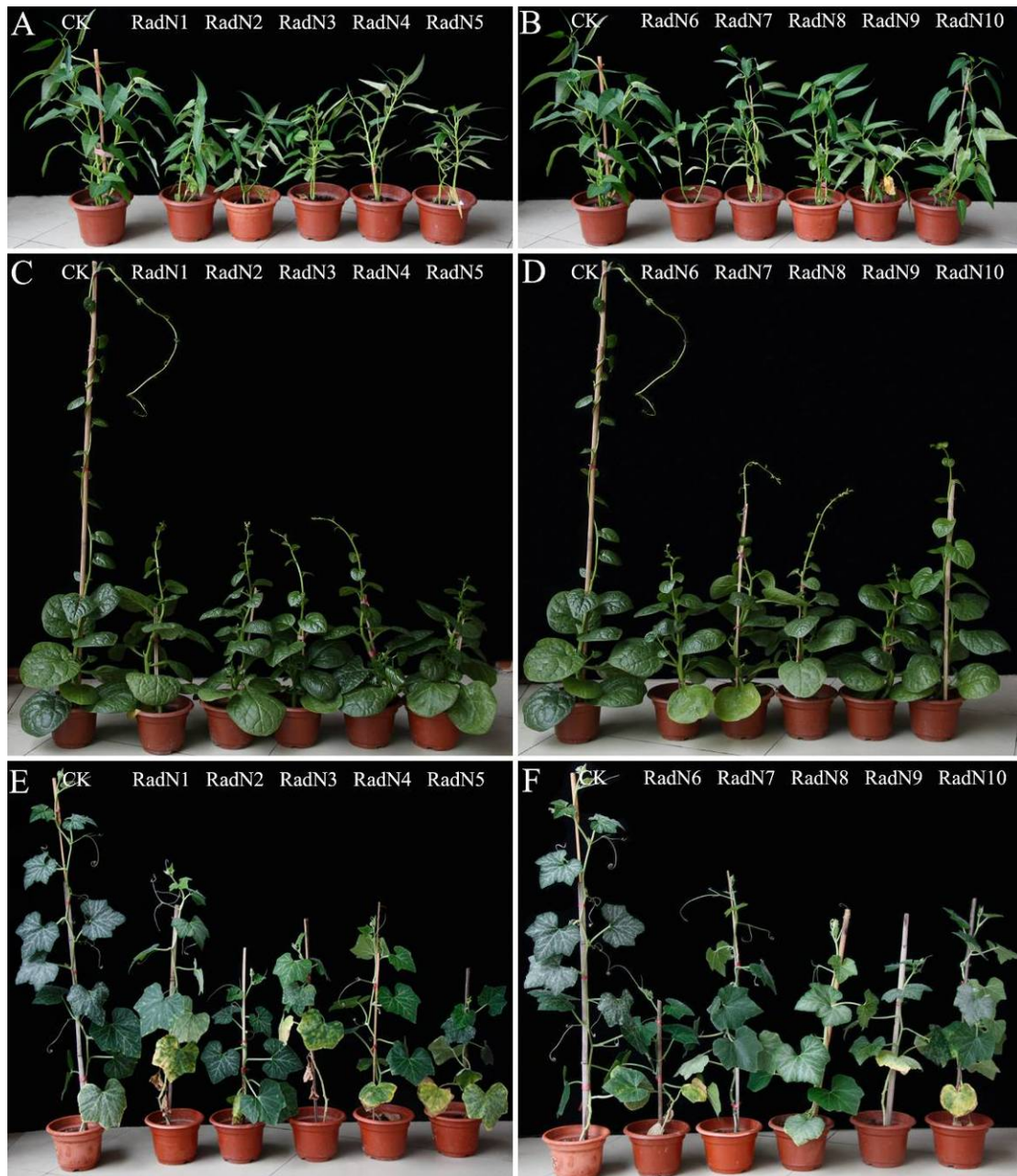


Fig. S1 Symptoms of the three studied plants inoculated with ten *Radopholus similis* populations for 60 days. A–B, *Ipomoea aquatica*. C–D, *Basella rubra*. E–F, *Cucurbita moschata*. CK, healthy plant; RadN1–RadN10, plants with poor growth after *R. similis* treatment.

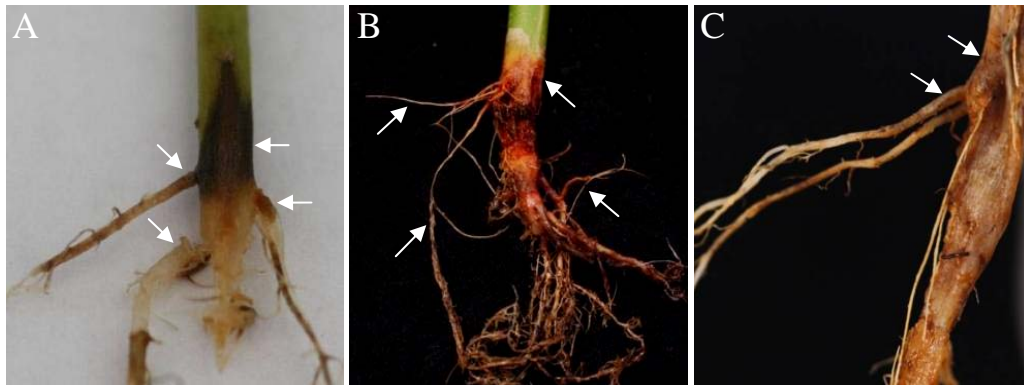


Fig. S2 Symptoms of stem base rots caused by *Radopholus similis*. A, *Ipomoea aquatic*. B, *Basella rubra*. C, *Cucurbita moschata*. Note nematodes at rotten roots migrated to the stem base, resulting in the stem base rot.