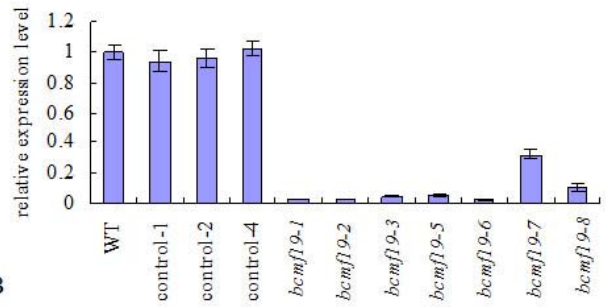
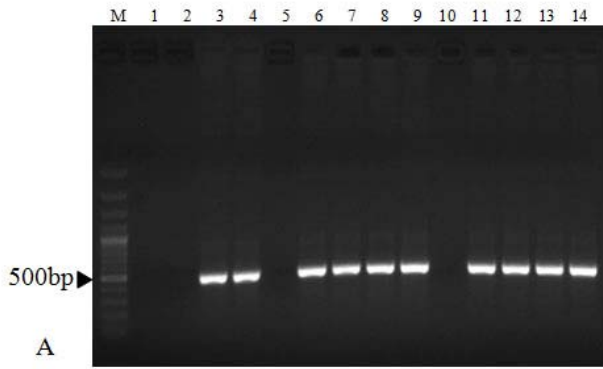


Appendix A Transgenic plant generation of *B. campestris* ssp. *chinensis* var. *parachinensis* with *BcMF19* antisense RNA by *A. tumefaciens*-mediated transformation. A, Sowing of seeds on MS culture medium. B, Seedling at 4-5 d. C, Explants at pre-culture. D, Co-culture. (E) Differentiating culture. F, Root induction of resistant seedlings. G, Regenerated plants before being transferred to the plot. H, Flowering of resistant plants. The bars represent 1 cm.



Appendix B Detection of *bcmf19* transgenic plants. A, PCR amplification of the *NPTII* gene. Lane M, DNA marker; lanes 1 and 2, ddH<sub>2</sub>O and wild type (WT) as negative controls; lanes 3-6, control plants as positive controls; lanes 7-14, antisense transgenic plants. B, Detection of *bcmf19* transgenic plants by qRT-PCR.