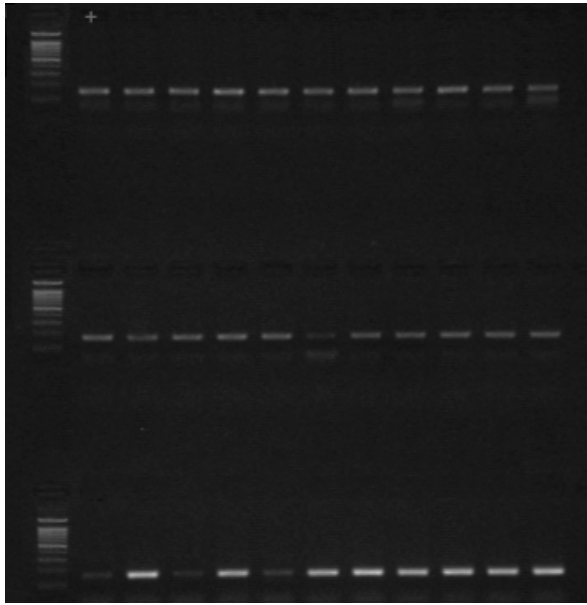
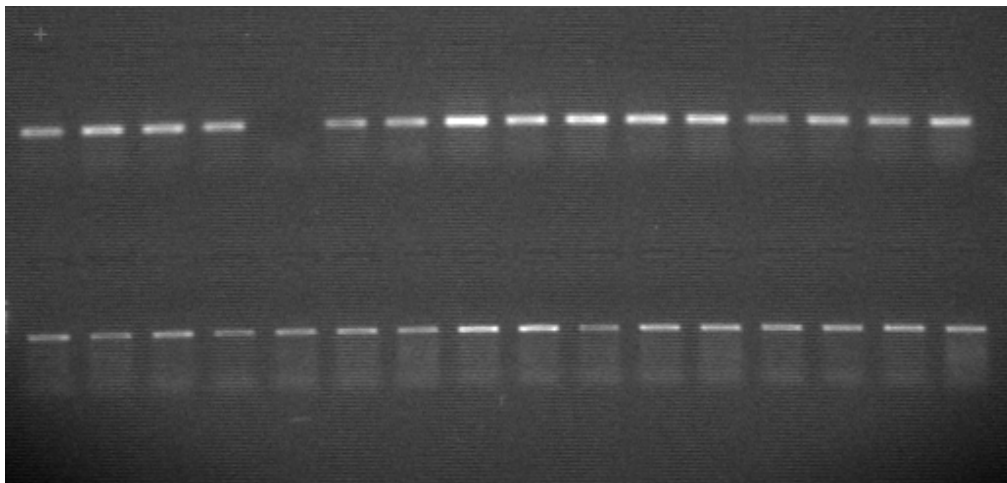


A



B



Appendix PCR analysis of *cry8Ca2* and *cry8Ga* transgenic ryegrass plants. Bar gene fragments (426 bp) were amplified from the genomic DNA of *cry8Ca2* (A) and *cry8Ga* (B) different T₀ transgenic lines, respectively. +, positive control from the plasmid DNA of pUbi3301. Primers for Bar were 5'-GCACCATCGTCAACC ACTAC-3' and 5'-AGAAACCCACGTCATGCCAG-3'